



KLOUD PROFILE

Kloud is a hybrid
Infrastructure Division of
Kyoto Technologies

Page of Contents

Introduction	03
About Kloud	04
Our Products & Solutions	08
Our Partners	10
Our Clients	11



Introduction

Kyoto is a leading Information and Communication Technologies (ICT) service provider. We operate internationally through our offices and antennas in United Arab Emirates, India, KSA & Africa.

We design, develop, support and promote software ICT applications using integrated, state of art technologies. To respond to today's challenges, we help organizations implement new technologies and transform their work methods.

We think about our customer's problems from customer's perspectives. We orchestrate, operate and optimize our customer's digital transformations projects. Our innovative solutions are designed to support you, today and tomorrow.

We have four lines of business



Kloud is a hybrid Infrastructure Division of Kyoto Technologies



Kaizen is a network & Cybersecurity Division of Kyoto Technologies



Kable is a ELV Division of Kyoto Technologies



Konnect is a Human Resource Solution Business unit of Kyoto Technologies



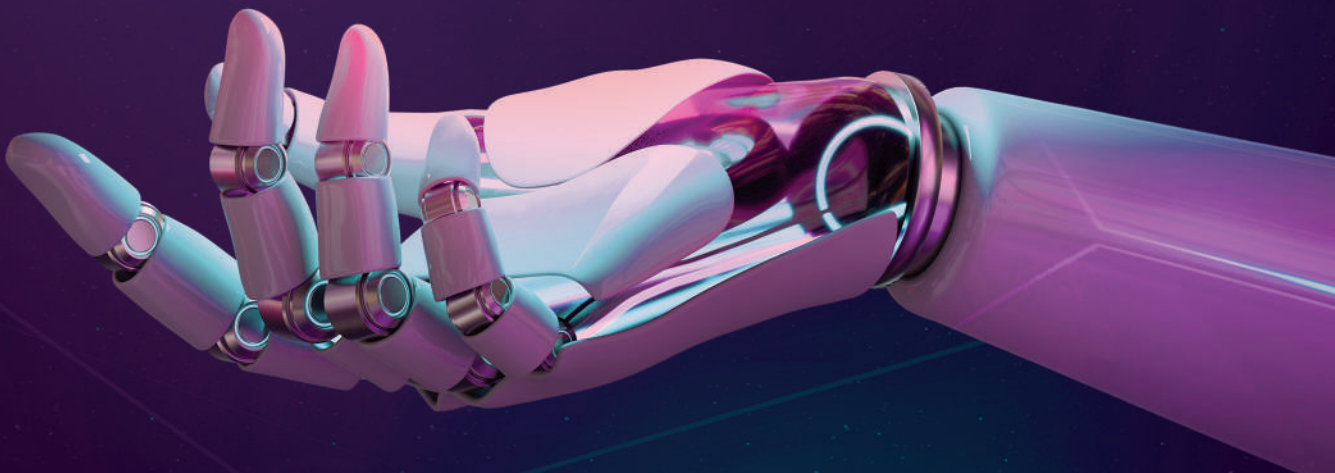
Cloud Computing: The third of wave of Digital Revolution

Enterprises are often driven to cloud engagement by the cost savings, or as part of a larger digital transformation, but the cloud journey is not always a smooth one. Savings may not be realized immediately, and a transformation that is not carefully planned could potentially be more disruptive. A cloud transformation needs to consider things such as the apps that will be migrated and supported by the cloud, network transformation, and whether hybridization will be a possibility. Kyoto's Kloud will be a useful resource for consultation and execution.

04



010010011011
011101010010



What is Cloud as in Kloud?



Cloud computing is an expanding technology that is leading the digital transformation of businesses in various sectors. The strategies that organizations take in their cloud journey can give them a competitive advantage and lead to rapid growth.

By moving to the cloud, businesses can reduce their energy consumption and carbon footprint by up to 90%. Rather than having in-house servers and software, businesses can use cloud-based services to access the same applications and data from any computer or device with an internet connection.



Cloud computing is greener. We believe it's not too late to plan for a cleaner, greener future. We've committed to sustainable technologies at the heart of our innovation to make sure we are adapting and growing along with the planet with the lowest environmental impact.



What's the Best Kloud Approach?

- ▶ **Cloud-First Approach:** The 'cloud-first' approach is a leading strategy that is recommended and who fails to do this will cause a business to fall behind their competition. The importance of cloud-first is that it is accepted by the whole organization. This means cloud solutions must focus on the complete use of cloud technology so that business leaders can develop the benefits and return greater profits.
- ▶ **Hybrid Cloud:** Hybrid cloud is the environment that connects the two in a single infrastructure. In order to offer more freedom or flexibility, hybrid cloud infrastructures should be built up from the foundations. When building and deploying applications to hybrid cloud, enterprises need to consider the productivity and enablement of the developer. The needs of an app can change,
- ▶ **Multi-Cloud:** A term that describes the use of a variety of cloud solutions in a single architecture as multi-cloud. While the governance of a single provider can be challenging, the challenges are vastly increased with a multi-cloud environment. The services provided are on-demand and self-service, but this places a greater emphasis on organizations to manage their own consumption, as well as their use of multiple providers.



06



What's the Best Kloud Approach?

Kyoto's Kloud helps businesses to access and plan for their digital transformation. We help you identify and prioritize the business's immediate modernization opportunities which in addition improves the cloud readiness and transformation roadmap to scale your business in future.

Not only this, but our team is also well-equipped with substantial experience to guide you with their personal insights making your transformation journey smooth as possible.

Migrating your organization's infrastructure to cloud solution helps you reduce maintenance of on-premises data centers as you can access the data from anywhere. Apart from this, it helps save money on hardware costs and gain real-time business insights.



SWOT Analysis



Readiness Assessment



Cloud-to-cloud movement



Migration of workloads



Validation and performance testing



Our Products & Solutions

08

No two clouds are exactly alike. Clouds are very similar and essentially have the same functionality. The difference lies in the way they're used by each individual business. Every company has different cloud needs and therefore, we build or alter their cloud technology to work for whatever those needs are...

Kyoto's Technologies offers the following Cloud solutions...

On-Premises

We deliver IT infrastructure such as the hardware and software applications that are hosted on-site and operated within your datacenter. You have complete control over the infrastructural setup. Data stays in your private network, nobody other than your team has access to the information. We provide:

- * Data Centre
- * Storage
- * Active Directory
- * IT Supplies
- * Backup & Disaster Recovery
- * Microsoft Exchange
- * Share Point
- * Licenses

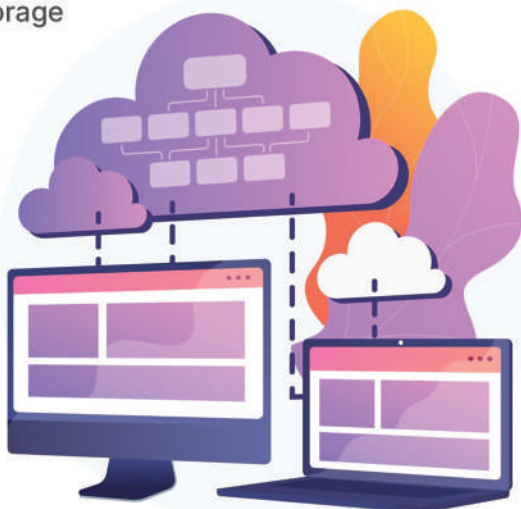




Hybrid Cloud

A hybrid cloud approach provides IT flexibility to combine the right infrastructure for each workload, whether it includes a private cloud, multitenant cloud, public cloud, or on-premises private cloud. Our managed hybrid cloud services meet you wherever you are on your cloud journey to help you keep performing at the highest levels so your IT staff can focus on innovation. We provide:

- * Office 365
- * Infrastructure as a service
- * Database as a service
- * Disaster Recovery as a Service
- * Intune Device Management
- * Active Directory domain services
- * Mail as a Service
- * Platform as a Service
- * Azure Virtual Desktop
- * Migration as a Service
- * Backup
- * Storage



Multi - Cloud

Our multi cloud services allow you to select the best combination of cloud platforms. This selection is based on your assessment of each business function's needs. Being a multi cloud service provider, we align your IT needs perfectly with different cloud platforms. We ensure a reduction in your IT infrastructure costs, thereby generating business value. We provide:

- * Infrastructure as a Service (IAAS)
- * Platform as a Service (PAAS)
- * Software as a Service (SAAS)
- * Backup
- * Containers
- * Disaster Recovery



Our Partners

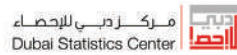
				
				
				
				
				
				
				

10



Our Clients

Over the last decade and more, we have worked with both high profile national and international brands, Here's a list of our clients.





GET IN TOUCH

 info@kyoto-tech.com

 +971 4 2268063

 www.kyoto-tech.com

 P.O Box: 126255 Dubai, UAE